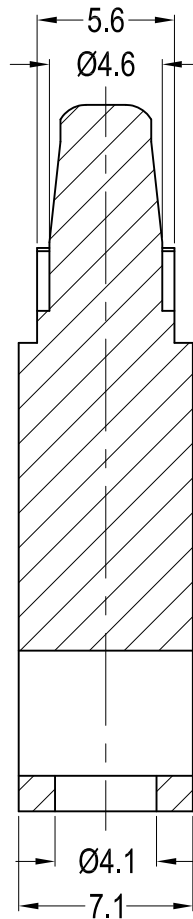


This position doesn't exist once "A"=11.1



Rivet Part Name	For Chassis Thickness
GR4040-SPB/W	0.1-0.7
GR4050B/W	0.7-1.6
GR4055B/W	1.2-2.2
GR4060B/W	1.5-2.7
GR4070B/W	2.7-3.7
GR4080B/W	3.7-4.7
GR4090B/W	4.7-5.7
GR4100B/W	5.7-6.7
GR4120B/W	7.2-8.7
GR4155B/W	10.7-12.2

Part No.	Part Name	Part No.	Part Name	A
42366	GSRLAHS-7-01	42508	GSRLAHS-7-19	11.1
42367	GSRLAHS-8-01	42509	GSRLAHS-8-19	12.7
42368	GSRLAHS-10-01	42510	GSRLAHS-10-19	15.9
42369	GSRLAHS-12-01	42511	GSRLAHS-12-19	19.1
42370	GSRLAHS-14-01	42512	GSRLAHS-14-19	22.2
42371	GSRLAHS-16-01	42513	GSRLAHS-16-19	25.4
Material: PA66 UL94 V2		Material: PA66 UL94 V0		

- Notes:
- 1.Color: Natural;
 - 2.RoHS Compliant;
 - 3.Top Hole: $\text{Ø}4.75 \pm 0.08\text{mm}$,
Panel Thickness: 0.79-1.98mm;
 - 4.Bottom Hole: Snap Rivet: $\text{Ø}4.1-4.2\text{mm}$,
Panel Thickness: See Rivet Table.

Gecko International Co.

Gecko International Co.						DATE	DATE	DIMENSION	TOLERANCE
TITLE	SNAP RIVET LOCKING CIRCUIT BOARD SUPPORT					SCALE	FIT	$L \leq 4$	± 0.10
PART NAME	GSRLAHS	MOLD NO.	S0848	DRAW	PLK	UNIT	MM	$4 < L \leq 15$	± 0.20
PART NO.	SEE TABLE	MATERIAL	SEE NOTES	DESIGN	PLK	VERSION	A0	$15 < L \leq 50$	± 0.30
DWG NO.	E4290	COLOR	SEE NOTES	APPROVAL	FDL	VIEW		$50 < L \leq 100$	± 0.40