

Fig.1

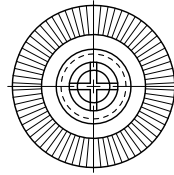
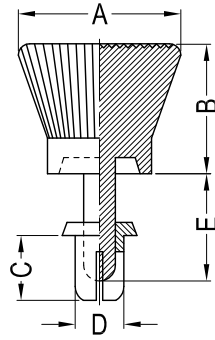
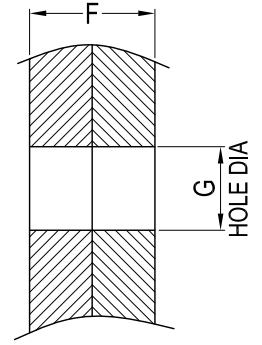


Fig.2



TOTAL
HOLDING
THICKNESS

Notes:
RoHS Compliant.

Material:PA6 UL94 V2 Color:Black / White		Hole Dia. G	Extraction Force Kgf(Min.)	F	A	B	C	D	E	Fig.								
Part No.	Article No.																	
20573/20574	GRT3035B/W	3.1-3.2	7.0	1.0-2.0	10.0	8.0	3.5	3.0	6.6	1								
20575/20576	GRT3045B/W			2.0-3.0			4.5											
20577/20578	GRT3055B/W			3.0-4.0			5.5											
20579/20580	GRT3065B/W			4.0-5.0			6.5											
20581/20582	GRT3075B/W			5.0-6.0			7.5											
20583/20584	GRT3080B/W			5.5-6.5			8.0											
20585/20586	GRT3535B/W	3.6-3.7	7.0	1.2-2.1			12.0	8.0	3.5		3.5	6.6	2					
20587/20588	GRT3545B/W			2.1-3.0					4.5									
20589/20590	GRT3555B/W			3.0-4.0					5.5									
20591/20592	GRT3560B/W			3.7-4.6					6.0									
20593/20594	GRT3570B/W			4.5-5.5					7.0									
20595/20596	GRT3580B/W			5.5-6.5					8.0									
20597/20795	GRT4050B/W-H10	4.1-4.2	15.0	2.5-3.5	12.0	8.0			5.0	4.0	7.6	2						
20598/20600	GRT4050B/W			3.5-4.5					6.0									
20601/20602	GRT4060B/W			4.5-5.5					7.0									
20603/20604	GRT4070B/W			5.5-6.5					8.0									
20605/20606	GRT4080B/W			6.5-7.5					9.0									
20607/20609	GRT4090B/W			7.5-8.5					10.0									
20610/20611	GRT4100B/W	4.4-4.9	15.0	7.5-8.5			12.0	8.0	10.0	4.0	11.2		2					
21643/21644	GRT4365B/W			4.0-4.3					6.5									
															6.5	4.3	8.5	

Gecko International Co.

DATE

2022-3-25

DIMENSION

TOLERANCE

TITLE

MOUNTING BUTTONS REMOVABLE

SCALE

FIT

$L \leq 4$

± 0.10

ARTICLE NO.

GRT

MOLD NO.

/

DRAW

JF

UNIT

MM

$4 < L \leq 15$

± 0.20

PART NO.

SEE TABLE

MATERIAL

SEE TABLE

DESIGN

JF

VERSION

A0

$15 < L \leq 50$

± 0.30

DWG NO.

/

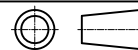
COLOR

SEE TABLE

APPROVAL

FDL

VIEW



$50 < L \leq 100$

± 0.40