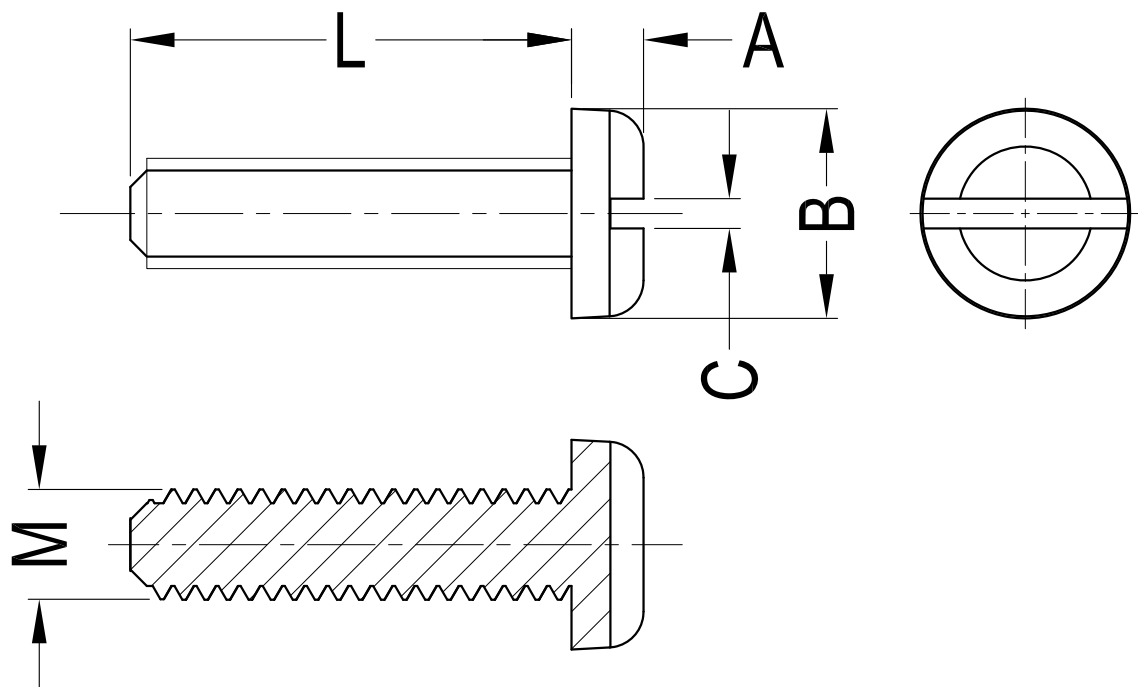


Notes:

1. Material: PA66 UL94 V2;
2. Color: Natural;
3. Male (M2) Torques: $\cong 0.06$ Nm;
 Male (M2.5) Torques: $\cong 0.08$ Nm;
 Male (M3) Torques: $\cong 0.13$ Nm;
 Male (M4) Torques: $\cong 0.3$ Nm;
 Male (M5) Torques: $\cong 0.58$ Nm;
 Male (M6) Torques: $\cong 0.8$ Nm;
 Male (M8) Torques: $\cong 2.5$ Nm;
4. RoHS Compliant.

REV	DESCRIPTION	DATE	CHECK
A1	①0.5 Change to 0.6; ②0.6 Change to 0.7;	2016-7-14	FDL



Part No. / Article No.	length																				A	B	C
	4.0	4.5	5.0	6.0	6.5	8.0	10.0	12.0	15.0	16.0	20.0	22.0	25.0	30.0	35.0	40.0	45.0	50.0	60.0				
GPHS-S-1580-M2-L	50010		50011	50012		50013	50014	50015		50016	50017		50018								1.3	Ø3.8	0.6 ^①
GPHS-S-1580-M2.5-L	50550	50036	50552	50037		50038	50039	50040		50041	50042		50043								1.5	Ø5.0	0.7 ^②
GPHS-S-1580-M3-L	50064		50065	50066		50067	50068	50069		50070	50071		50072	50073	50074	50075					1.7	Ø5.5	0.9
GPHS-S-1580-M4-L	50517			50109		50110	50111	50112	50555	50113	50114		50115	50116		50117					2.4	Ø7.8	1.3
GPHS-S-1580-M5-L				50146		50147	50148	50149		50150	50151		50152	50153		50154		50155			3.0	Ø9.4	1.3
GPHS-S-1580-M6-L			50189	50190	50191	50192	50193	50194		50195	50196	50558	50197	50198		50199		50200	50201		3.5	Ø11.8	1.7
GPHS-S-1580-M8-L						50715	50576	50577		50578	50579		50580	50581	50582	50583	50584	50585			4.8	Ø15.8	2.2

Gecko International Co.

DATE

2022-1-14

DIMENSION

TOLERANCE

TITLE

SLOTTED PAN HEAD SCREW

SCALE

FIT

L ≤ 4

±0.10

ARTICLE NO.

GPHS-S-1580

MOLD NO.

/

DRAW

JF

UNIT

MM

4 < L ≤ 15

±0.20

PART NO.

SEE TABLE

MATERIAL

SEE NOTES

DESIGN

JF

VERSION

A1

15 < L ≤ 50

±0.30

DWG NO.

E5002

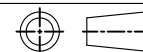
COLOR

SEE NOTES

APPROVAL

FDL

VIEW



50 < L ≤ 100

±0.40