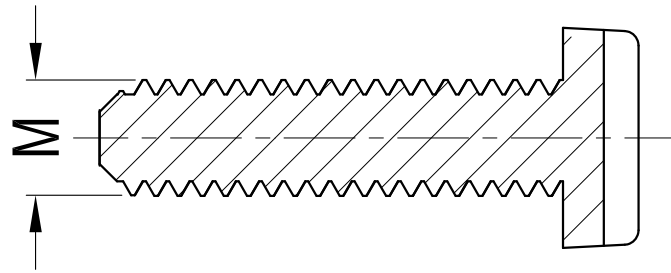
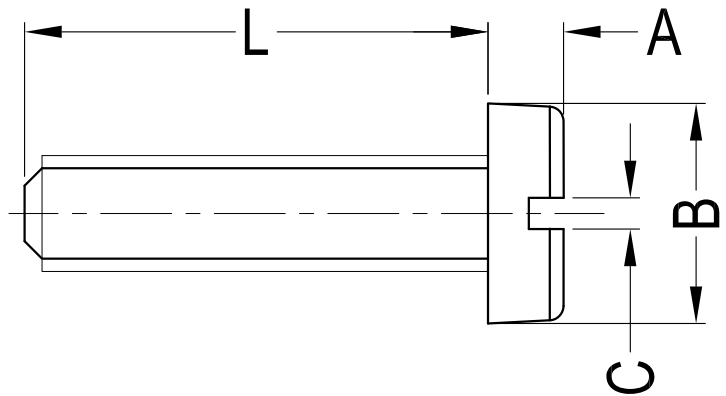


REV	DESCRIPTION	DATE	CHECK
A1	①0.5 Change to 0.6; ②0.6 Change to 0.7; ③0.8 Change to 0.9; ④1.2 Change to 1.3; ⑤1.6 Change to 1.7.	2016-7-14	FDL



Notes:

1. Material: PA66 UL94 V2;
2. Color: Natural;
3. Male (M2) Torques: $\cong 0.06$ Nm;
Male (M2.5) Torques: $\cong 0.08$ Nm;
Male (M3) Torques: $\cong 0.13$ Nm;
Male (M4) Torques: $\cong 0.3$ Nm;
Male (M5) Torques: $\cong 0.58$ Nm;
Male (M6) Torques: $\cong 0.8$ Nm;
Male (M8) Torques: $\cong 2.5$ Nm;
4. RoHS Compliant.

Part No. / length Article No.	4.0	4.5	5.0	6.0	6.5	8.0	10.0	12.0	15.0	16.0	20.0	22.0	25.0	30.0	35.0	40.0	45.0	50.0	60.0	A	B	C
	GCHS-S-1207-M2-L	50000		50001	50003		50004	50005	50006		50007	50008		50009							1.3	Ø3.8
GCHS-S-1207-M2.5-L	50461	50028	50509	50029		50030	50031	50032		50033	50034		50035							1.8	Ø4.5	0.7 ②
GCHS-S-1207-M3-L	50052		50053	50054		50055	50056	50057		50058	50059		50060	50061	50062	50063				2.0	Ø5.5	0.9 ③
GCHS-S-1207-M4-L	50516			50100		50101	50102	50103	50554	50104	50105		50106	50107		50108				2.6	Ø7.0	1.3 ④
GCHS-S-1207-M5-L				50136		50137	50138	50139		50140	50141		50142	50143		50144		50145		3.3	Ø8.5	1.3 ④
GCHS-S-1207-M6-L			50176	50177	50178	50179	50180	50181		50182	50183	50557	50184	50185		50186		50187	50188	3.9	Ø10.0	1.7 ⑤
GCHS-S-1207-M8-L						50660	50566	50567		50568	50569		50570	50571	50572	50573	50574	50575		4.9	Ø12.8	2.2

Gecko International Co.

DATE

2021-1-25

DIMENSION

TOLERANCE

TITLE

SLOTTED CHEESE HEAD SCREW

SCALE

FIT

$L \leq 4$

± 0.10

ARTICLE NO.

GCHS-S-1207

MOLD NO.

/

DRAW

JF

UNIT

MM

$4 < L \leq 15$

± 0.20

PART NO.

SEE TABLE

MATERIAL

SEE NOTES

DESIGN

JF

VERSION

A1

$15 < L \leq 50$

± 0.30

DWG NO.

E5001

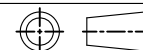
COLOR

SEE NOTES

APPROVAL

FDL

VIEW



$50 < L \leq 100$

± 0.40