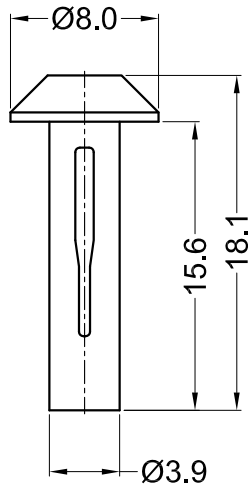
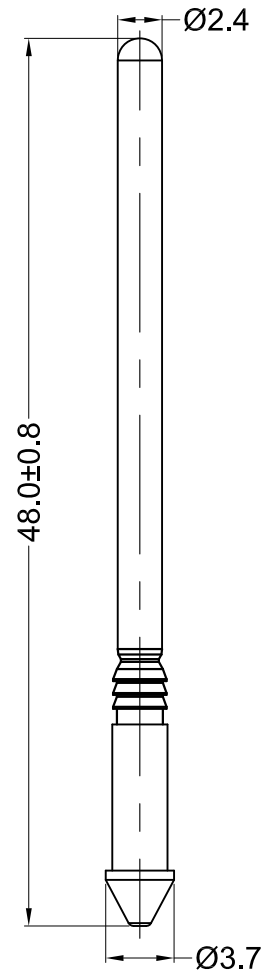


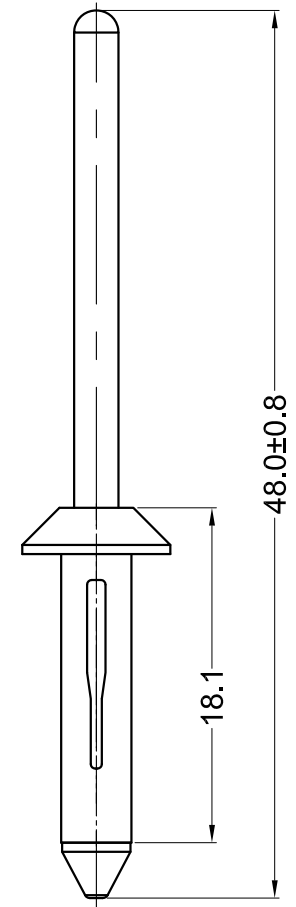
### Body



### Pin



### Assembly Part



#### Notes:

1. Material: PA6 UL94V2 (Body)  
POM UL94HB (Pin);
2. Color: Black;
3. RoHS Compliant;
4. Hole:  $\text{Ø}4.0^{+0.1}_0$  mm;  
Panel Thickness: 1.5-4.5 mm.

Gecko International Co.						DATE	2013-5-30	DIMENSION		TOLERANCE	
TITLE	BLIND RIVETS					SCALE	FIT	$L \leq 4$		$\pm 0.10$	
PART NAME	G49060810	MOLD NO.	S0618/619	DRAW	ZHR	UNIT	MM	$4 < L \leq 15$		$\pm 0.20$	
PART NO.	20890	MATERIAL	SEE NOTES	DESIGN	ZHR	VERSION	A0	$15 < L \leq 50$		$\pm 0.30$	
DWG NO.	E2219	COLOR	SEE NOTES	APPROVAL	FDL	VIEW		$50 < L \leq 100$		$\pm 0.40$	