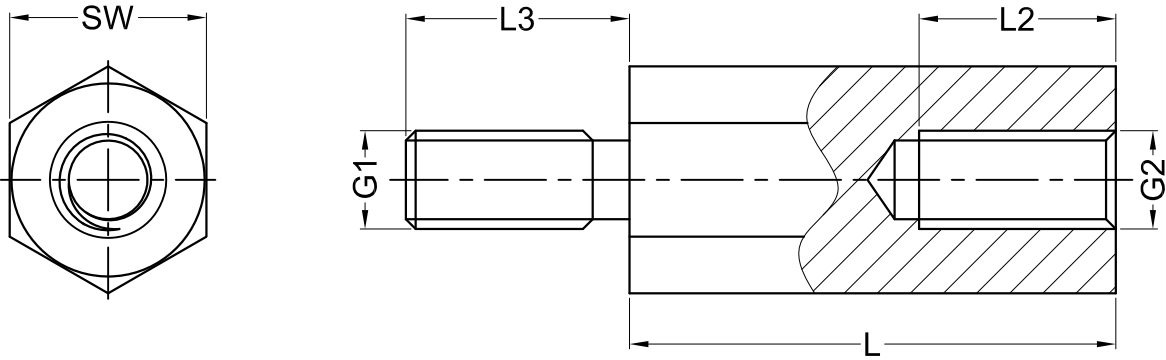


Internal Thread Lengths (mm)						
L	L2 (M2.5)	L2 (M3)	L2 (M4)	L2 (M5)	L2 (M6)	L2 (M8)
5	2.5	2.5	/	/	/	/
8	5	5	5	/	/	/
10	6	6	6	6	5	/
12	7	7	8	8	7	/
15	7	7	9	10	10	10
18	7	7	9	10	12	12
From 20	7	7	9	10	12	14

External Thread Lengths (mm)	
G1=G2	L3
M2.5	6
M3	6
M4	8
M5	8
M6	10
M8	14
/	/

Type	Hexagonal
Styles	Internal/External with undercut (optional without undercut)
Material	Stainless Steel 1.4305
Standard Pack	From 100 pcs
Length Tolerance	± 0.1 mm
Minimum Tensile Strength	750 N/mm ²



Part No.	SW (Hexagon)	G1=G2 (Thread)	Standard L Length In (mm)																						
			05	08	10	12	15	18	20	25	30	35	40	45	50	55	60	65	70	75	80	85	90	95	100
242 x L (Length)	SW 5	M2.5	05	08	10	12	15	18	20	25	30	35	40	45	50	55	60								
244 x L	SW 5.5	M3	05	08	10	12	15	18	20	25	30	35	40	45	50	55	60	65	70						
246 x L	SW 7	M4		08	10	12	15	18	20	25	30	35	40	45	50	55	60	65	70	75	80	85	90	95	100
248 x L	SW 8	M5			10	12	15	18	20	25	30	35	40	45	50	55	60	65	70	75	80	85	90	95	100
249 x L	SW 10	M6			10	12	15	18	20	25	30	35	40	45	50	55	60	65	70	75	80	85	90	95	100
2413 x L	SW 13	M8					15		20	25	30	35	40	45	50		60		70		80		90		100

Order Example	Additional Information 1	Additional Information 2
With undercut: 242 x L = 242 x 10 mm Without undercut: 242 x L = 242 x 10 mm (without undercut)	The option "without undercut" is without extra charge.	SW 13 applies for DIN 2768-m

Gecko International Co.						DATE	2012-4-28
TITLE	HEX SPACER - MALE / FEMALE					SCALE	FIT
PART NAME	/	MOLD NO.	/	DRAW	JF	UNIT	MM
PART NO.	SEE TABLE	MATERIAL	SEE TABLE	DESIGN	JF	VERSION	A0
DWG NO.	E0019	COLOR	/	APPROVAL	FDL	VIEW	