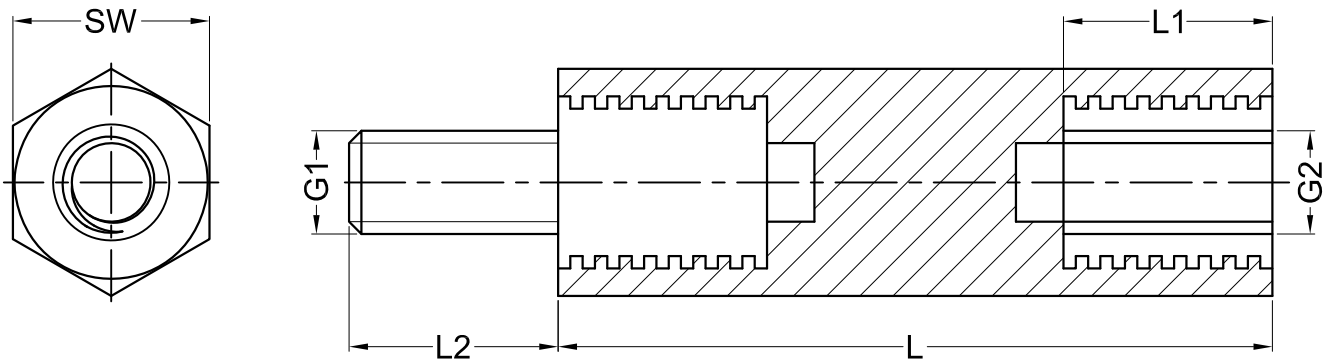


Type	Hexagonal
Styles	Internal/External without undercut DIN 76
Material	Body: Polyamide 6.6
	Thread: Brass blank
Colour	Natural
Standard Pack	From 100 pcs
Volume Resistance	10^{12} Ohm/cm
Disruptive Strength	50 kV/mm
Length Tolerance	± 0.2 mm



Part No.	SW (Hexagon)	G1=G2 (Thread)	L1	L2	Standard L Length In mm (Scale Length)	Torques (Nm)	Pull-Out Torques (N)
218139 x L (Length)	SW 13	M6	11	12	25 - 100	12	1000
2181510 x L	SW 15	M8		14	25 - 100	18	1600

Order example	Additional Information
218139 x L = 218139 x 25 mm	Torque and pull-out torques may vary in dependency of their intended purposes and environmental influences (e.g. temperature, humidity etc.) We recommend tests with materials in case of critical or unclear applications. Gecko International Co. assumes no liability for the mechanical strength values.

Gecko International Co.							DATE	2012-4-28
TITLE	HEX SPACER - MALE / FEMALE						SCALE	FIT
PART NAME	/	MOLD NO.	/	DRAW	JF	UNIT	MM	
PART NO.	SEE TABLE	MATERIAL	SEE TABLE	DESIGN	JF	VERSION	A0	
DWG NO.	E0028	COLOR	SEE TABLE	APPROVAL	FDL	VIEW		