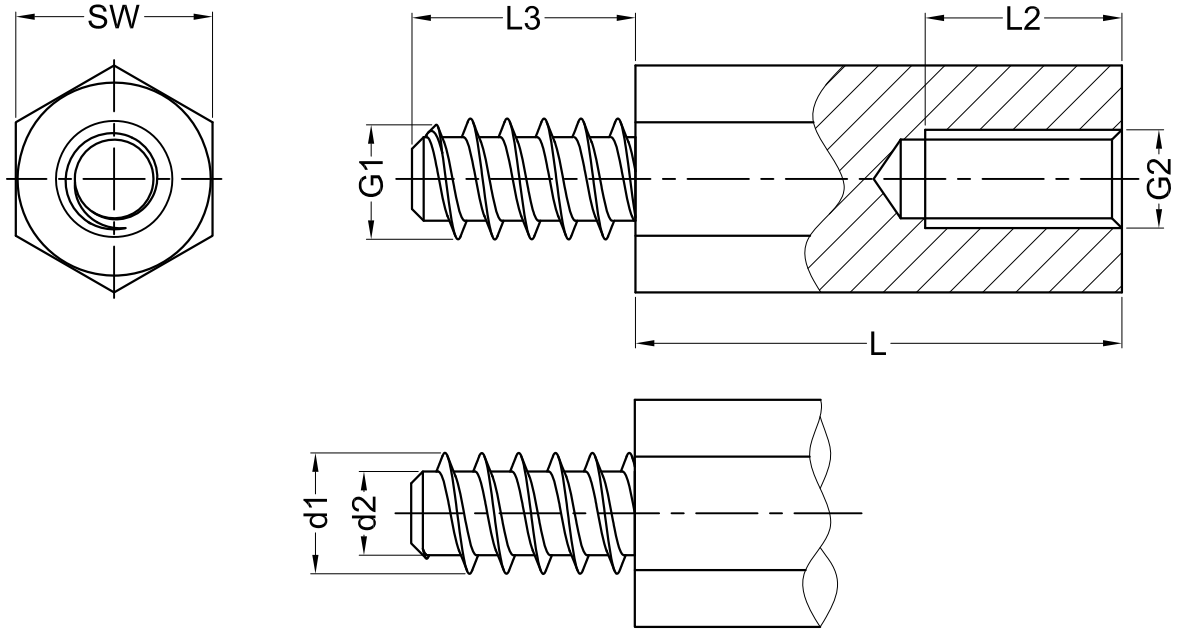


External Thread G1 (mm)			
Thread Size	L3	d1	d2
ST2.2	5	2.1	1.6
ST2.9	6	2.8	2.1
ST3.3	6	3.2	2.3
ST3.5	7	3.4	2.6
ST4.2	8	4.1	3.0
ST4.8	8	4.7	3.5
ST6.3	10	6.1	4.8

Internal Thread G2 (mm)	
L	L2
8	5
10	6
12	7
15	10
20	10
/	/
/	/

Type	Hexagonal
Styles	Internal/external with undercut (optional without undercut)
Material	Brass 2.0401
Surface	Nickel Plated (G3E)
Standard Pack	From 100 pcs
Length Tolerance	± 0.1 mm



Part No.	SW (Hexagon)	G1 (Thread)	G2 (Thread)	Standard L Length In (mm)				
				08	10	12	15	20
212ST2.2 x L (Length)	SW 5	ST2.2	M2.5	08	10	12	15	20
214ST2.9 x L	SW 5.5	ST2.9	M3	08	10	12	15	20
214ST3.3 x L	SW 5.5	ST3.3	M3	08	10	12	15	20
215ST3.5 x L	SW 6	ST3.5	M3	08	10	12	15	20
216ST4.2 x L	SW 7	ST4.2	M4	08	10	12	15	20
218ST4.8 x L	SW 8	ST4.8	M5	08	10	12	15	20
219ST6.3 x L	SW 10	ST6.3	M6		10	12	15	20

Order Example	Additional Information
With undercut: 212ST2.2 x L = 212ST2.2 x 10 mm Without undercut: 212ST2.2 x L = 212ST2.2 x 10 mm (without undercut)	The option "without undercut" is without extra charge.

Gecko International Co.						DATE	2020-7-30
TITLE	HEX SPACER - MALE / FEMALE					SCALE	FIT
PART NAME	/	MOLD NO.	/	DRAW	JF	UNIT	MM
PART NO.	SEE TABLE	MATERIAL	SEE TABLE	DESIGN	JF	VERSION	A0
DWG NO.	E0013	COLOR	/	APPROVAL	FDL	VIEW	