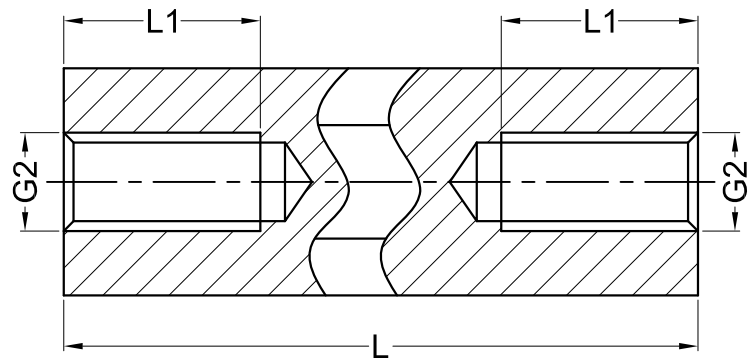
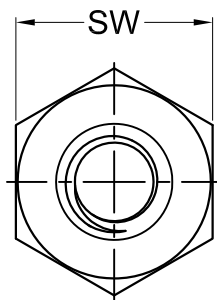


### Thread Lengths (mm)

L	L1 (M2)	L1 (M2.5 to M8)
5	5	5
6	6	6
8	8	8
10	10	10
12	6	12
15	6	15
18	6	9
From 20	6	10

Type	Hexagonal
Styles	Internal/Internal
Material	Brass 2.0401
Surface	Nickel Plated (G3E)
Standard Pack	From 100 pcs
Length Tolerance	± 0.1 mm
Minimum Tensile Strength	430 N/mm <sup>2</sup>



Part No.	SW (Hexagon)	G2 (Thread)	Standard L Length In (mm)																											
			05	06	08	10	12	15	18	20	25	30	35	40	45	50	55	60	65	70	75	80	85	90	95	100				
111 x L (Length)	SW 4	M2	05	06	08	10	12	15	18	20	25	30	35	40	45	50														
112 x L	SW 4	M2.5	05	06	08	10	12	15	18	20	25	30	35	40	45	50														
112 x L	SW 5	M2.5	05	06	08	10	12	15	18	20	25	30	35	40	45	50	55	60												
113 x L	SW 5	M3	05	06	08	10	12	15	18	20	25	30	35	40	45	50	55	60												
114 x L	SW 5.5	M3	05	06	08	10	12	15	18	20	25	30	35	40	45	50	55	60	65	70										
115 x L	SW 6	M3	05		08	10	12	15	18	20	25	30	35	40	45	50	55	60	65	70	75	80	85	90	95	100				
116 x L	SW 7	M4	05	06	08	10	12	15	18	20	25	30	35	40	45	50	55	60	65	70	75	80	85	90	95	100				
118 x L	SW 8	M5			08	10	12	15	18	20	25	30	35	40	45	50	55	60	65	70	75	80	85	90	95	100				
119 x L	SW 10	M6				10	12	15	18	20	25	30	35	40	45	50	55	60	65	70	75	80	85	90	95	100				
1113 x L	SW 13	M8						15		20	25	30	35	40	45	50	55	60	65	70	75	80	85	90	95	100				

Order Example: 111 x L = 111 x 10 mm

Gecko International Co.						DATE	2012-4-28
TITLE	HEX SPACER - FEMALE / FEMALE					SCALE	FIT
PART NAME	/	MOLD NO.	/	DRAW	JF	UNIT	MM
PART NO.	SEE TABLE	MATERIAL	SEE TABLE	DESIGN	JF	VERSION	A0
DWG NO.	E0007	COLOR	/	APPROVAL	FDL	VIEW	